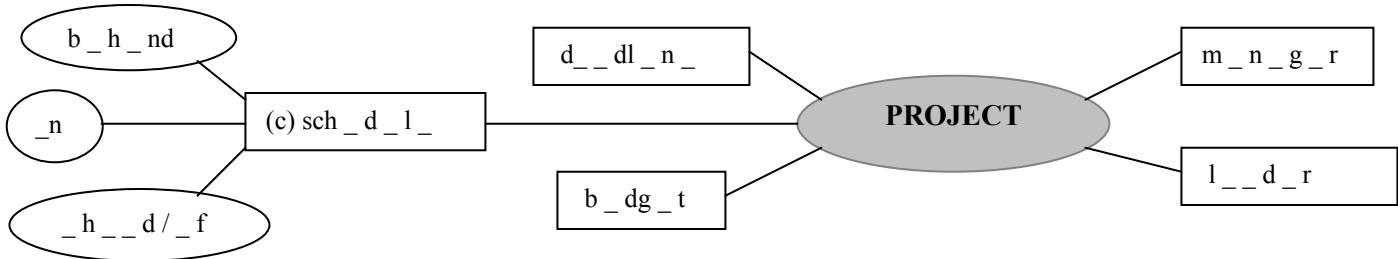


Berlin Central station

Last month, the biggest station in Europe opened in Berlin. Were corners cut in order to complete the project on time?

1 Replace the missing vowels in the words connected with the word 'project'. Check you can use these expressions.



2 Complete the missing information in the Fact Box by scanning the article.

Fact Box: Berlin Central station			
Opened:	May 2006	Expected number of trains per day:	
Height:		Expected number of passengers per day:	
Number of storeys:		Estimated cost:	

A new station in a united capital

The biggest railway station in Europe was officially opened last month. 46 metres tall, this five-storey steel and glass structure is certainly impressive; it has been called another victory for German engineering. The plans for the project were made shortly after the fall of the Berlin Wall in 1989; the opening was just in time for the World Cup. 300,000 passengers and 1,100 regional, national and international trains are expected to pass through the new station every day.

The estimated cost is around 700 million Euros. However, the overall cost of reconstructing the area around the central station, including new roads, is much higher. In order to meet the deadline for the new station, a halt was called in the construction of the transparent roof. This has led to critics

saying the design is incomplete. It seems that all major projects of this kind – whether they be a new Olympic stadium or another airport – are rarely completed on schedule. Neither do they meet their budget. Why?

Those who are in favour of building the station describe it as a wonderful new architectural highlight in central Berlin. It is, according to supporters, a symbol of a modern country. There are, however, many critics of the station who say it is too far from the city's main social and commercial attractions. Only when the station has better bus links will the offices, hotels and apartments be built. These, it is hoped, will help the city financially; at the moment, it faces huge debts. It could take years before the station is successful in attracting business. Until then, just the architecture of the station itself is enough of an attraction to encourage visitors.

3 Read the whole article. What is your reaction to the building of the new station?

4 Find one word in each line which does not form a collocation with the word at the end.

1. (a) to back	(b) to begin	(c) to cancel	(d) to finance	(e) to plan	(f) to impress	(a) project
2. (a) to abandon	(b) to complete	(c) to expect	(d) to start	(e) to halt	(f) to sponsor	
3. (a) ambitious	(b) high	(c) long-term	(d) short term	(e) innovative	(f) imaginative	
4. (a) costly	(b) huge	(c) pilot	(d) successful	(e) round	(f) ongoing	

5 Work in small groups. Prepare a short talk about a project you are involved in, or were involved in. Try and use some of the words in exercises 1 and 4. Be ready to answer questions on the project.